

BPK-SNAP blank plates for KEL-SNAP frames

& KDR-ESR enclosure gland plates / IP54



IP54

RoHS
compliant

REACH
COMPLIANCE

Made in
Germany

Blank plate BPK-SNAP to close cut-outs of pre-assembled [KEL-SNAP frames](#).

A snap frame can be closed, i.e. during transport to avoid entry of dust, as long as a KEL frame is not mounted.

The BPK-SNAP blank plate is simply snapped on the KEL-SNAP frame. There is no tool needed to remove it.

BPK-SNAP 16 and BPK-SNAP 24 for closing cut-outs of the KEL-SNAP mounting frames and unused Slide frames of the [KDR-ESR gland plates](#).

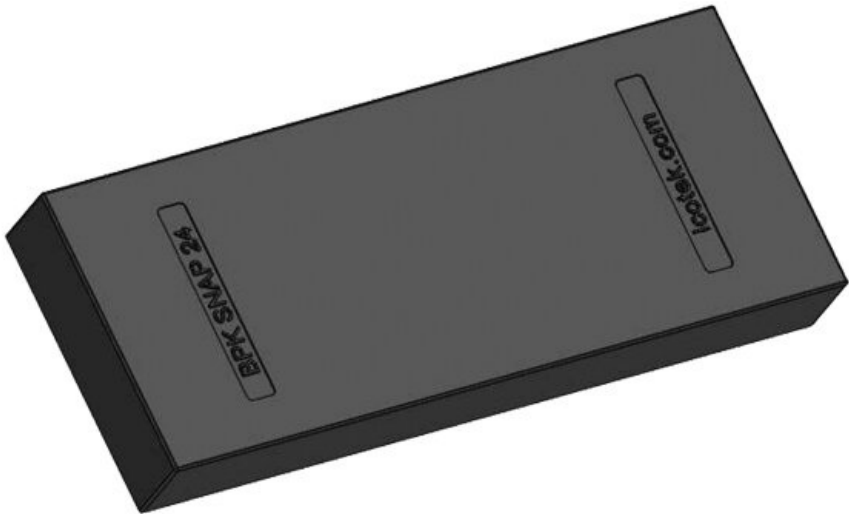
Specifications

IP rating (EN 60529)	IP54
Material	Polyamide
Flame class	UL94-V0, self-extinguishing
Operating temperature	-40 C° to 80 C°
Properties	silicone free, halogen free
Mounting options	Snap-in with KEL-SNAP

Advantages & Benefits

Product Types & Sizes

BPK-SNAP 24



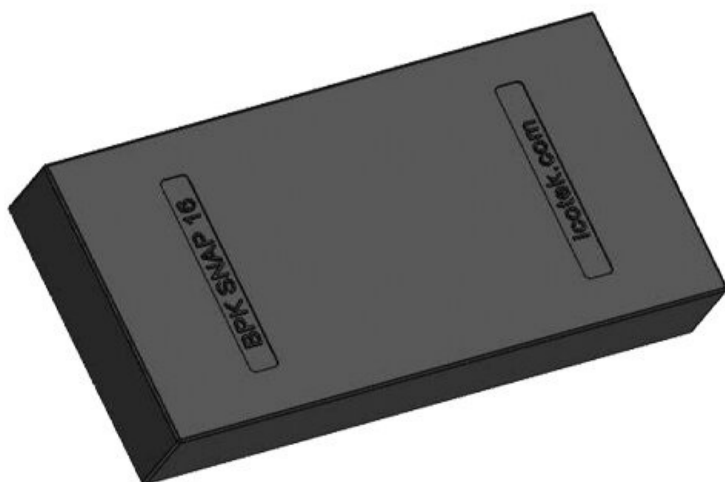
Part No.	42017
EAN	4251269307
	492
Package quantity	10
Length	147 mm
Width	58 mm
Height	17 mm
Suitable for cable entry systems:	KEL-SNAP 24, KEL-SNAP-S 24, KDR-ESR

BPK-SNAP-24-E



Part No.	42008
EAN	4251269321511
Package quantity	10
Length	147 mm
Width	83 mm
Height	17 mm
Suitable for cable entry systems:	KEL-SNAP 24-E

BPK-SNAP 16



Part No.	42007
EAN	4251269307386
Package quantity	10
Length	120 mm
Width	58 mm
Height	17 mm
Suitable for cable entry systems:	KEL-SNAP 16, KEL-SNAP-S 16, KDR-ESR

BPK-SNAP 10

Part No.	42004
EAN	4251269307379
Package quantity	10
Length	98 mm
Width	58 mm
Height	17 mm
Suitable for cable entry systems:	KEL-SNAP 10, KEL-SNAP-S 10

**BPK-SNAP-B**

Part No.	42003
EAN	4251269307362
Package quantity	10
Length	73 mm
Width	58 mm
Height	17 mm
Suitable for cable entry systems:	KEL-SNAP-B, KEL-SNAP-S-B

